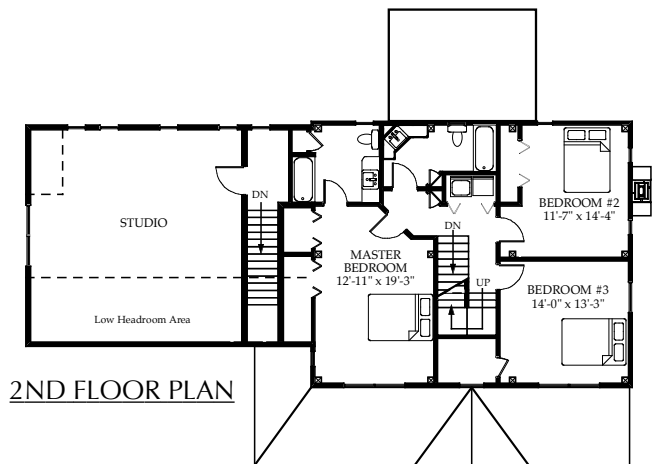




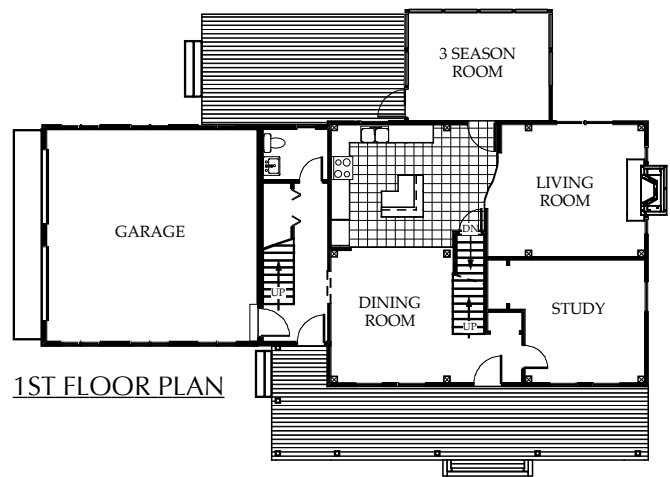
FRONT ELEVATION



SIDE ELEVATION



2ND FLOOR PLAN



1ST FLOOR PLAN

THE NEWFANE:  
 34' X 28' 2 STORY TIMBER FRAME MAIN HOUSE  
 8' DEEP COVERED ENTRY PORCH  
 16' X 12' 3 SEASON ROOM  
 22' X 12' DECK  
 32' X 24' GARAGE/MUDROOM/STUDIO

SQUARE FOOTAGE

Heated 1st Floor Living Area	1142 sqft
3 Season Room (Unheated)	200 sqft
Garage (Unheated)	563 sqft
Heated 2nd Floor Living Area	1705 sqft
 Total Area	 3610 sqft

**Tree House**  
 Timber Frame & Log Homes  
 (802) 896 - 6359

**THE NEWFANE**

John R. Guminak  
 Drafting & Design Services  
 (802) 464 - 7887