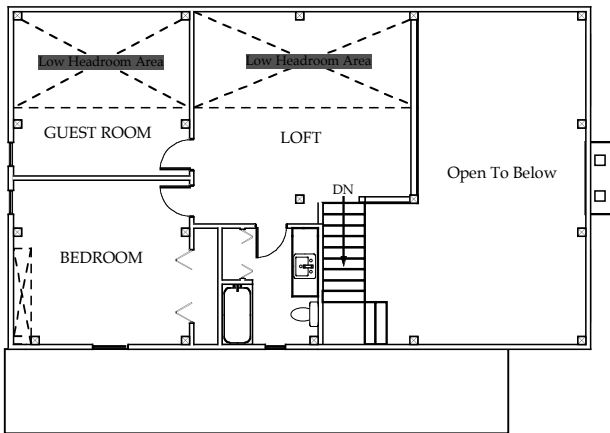




Front Elevation



2ND FLOOR PLAN

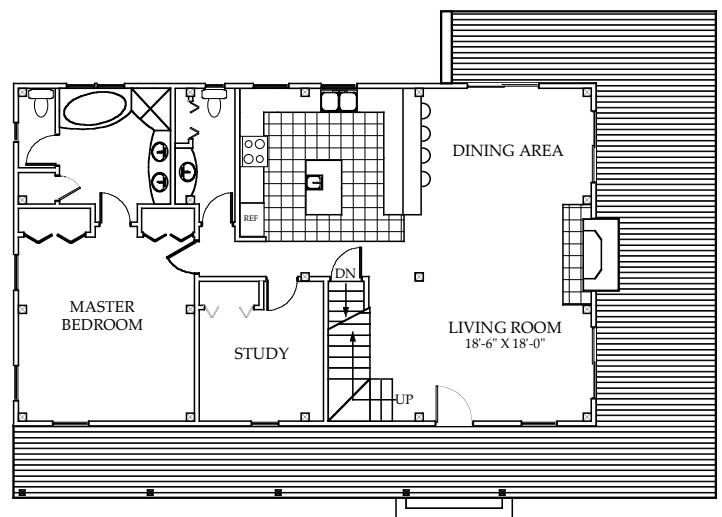


Side Elevation

THE BROOKLINE:
 48' X 28' 1/2 STORY TIMBER FRAME
 6' COVERED PORCH & 10' DECK

SQUARE FOOTAGE

Heated 1st Floor Living Area	1344 sqft
Heated 2nd Floor Living Area	840 sqft
Total Area	2184 sqft



1ST FLOOR PLAN

Tree House
 Timber Frame & Log Homes
 (802) 896 - 6359

THE BROOKLINE

John R. Guminak
 Drafting & Design Services
 (802) 464 - 7887