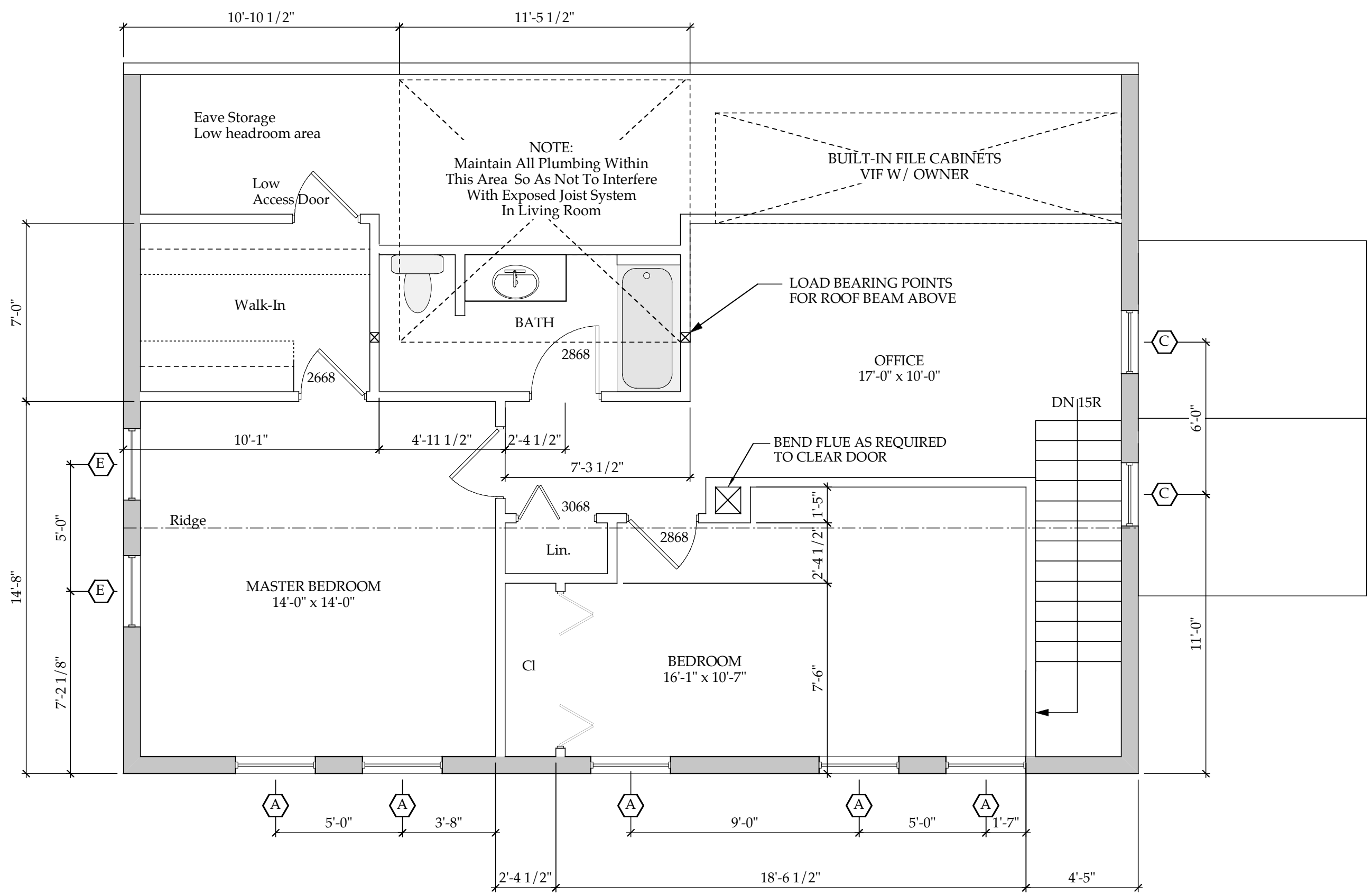


John R. Guminak
 Drafting & Design
 Services
 West Dover, Vt.
 For
TREEHOUSE
 Log & Timber Frame
 Homes
 W. Wardsboro, Vt.
 John & Jennifer
 Pontius



RESIDENCE
 FOR
 JOHN & JENNIFER
 PONTIUS

4/18/00
 DATE

1/4" = 1'-0"
 SCALE

A3.3

2ND FLOOR
 PLAN
 SHEET



2ND FLOOR PLAN
 APPROX. LIVING AREA = 1120 SQFT