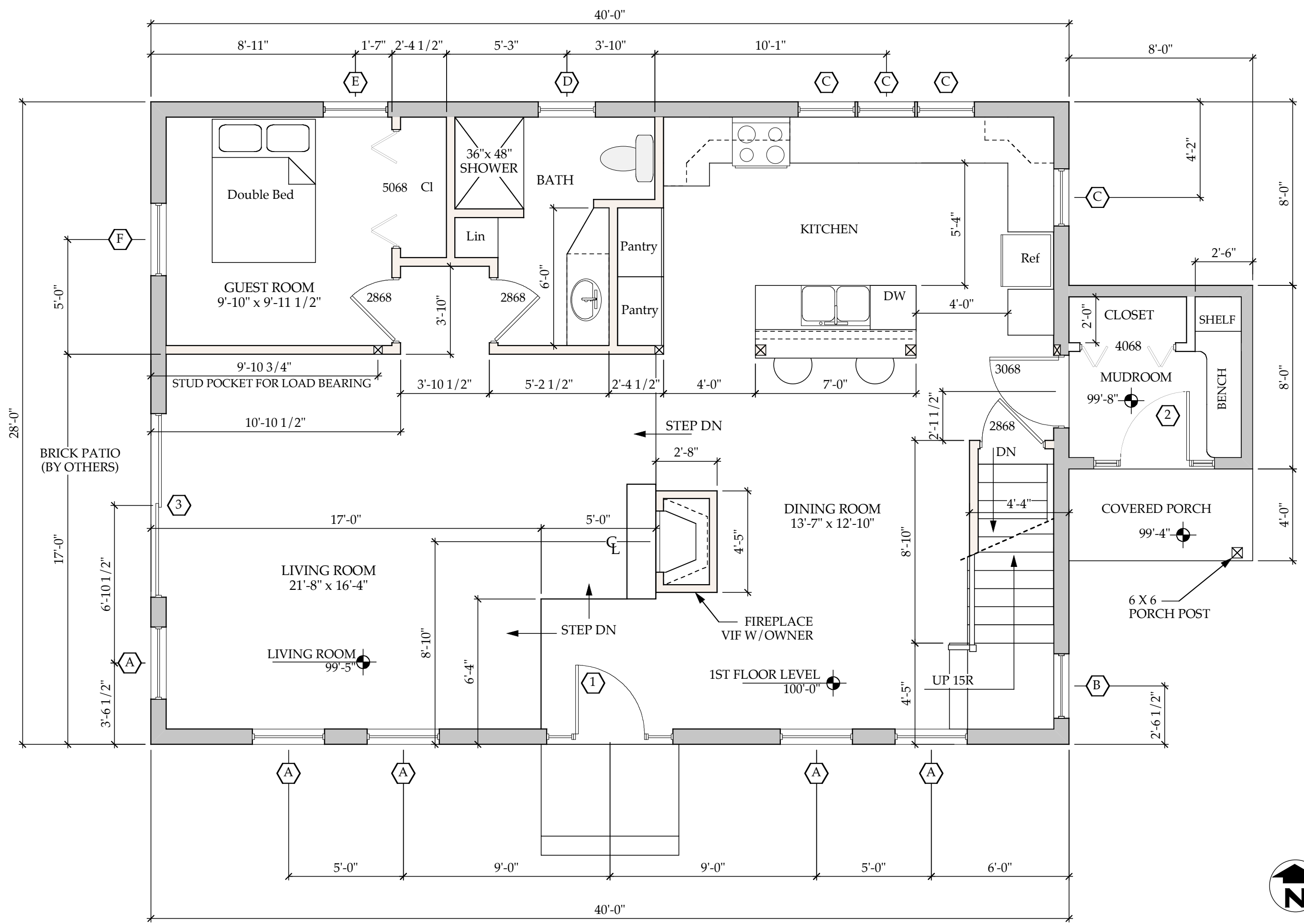


John R. Guminak
 Drafting & Design
 Services
 West Dover, Vt.
 For
TREEHOUSE
 Log & Timber Frame
 Homes
 W. Wardsboro, Vt.
 John & Jennifer
 Pontius



1ST FLOOR PLAN
 APPROX. LIVING AREA = 1184 SQFT

RESIDENCE FOR JOHN & JENNIFER PONTIUS
4/18/00 DATE
1/4" = 1'-0" SCALE
<h1>A3.2</h1>
1ST FLOOR PLAN SHEET