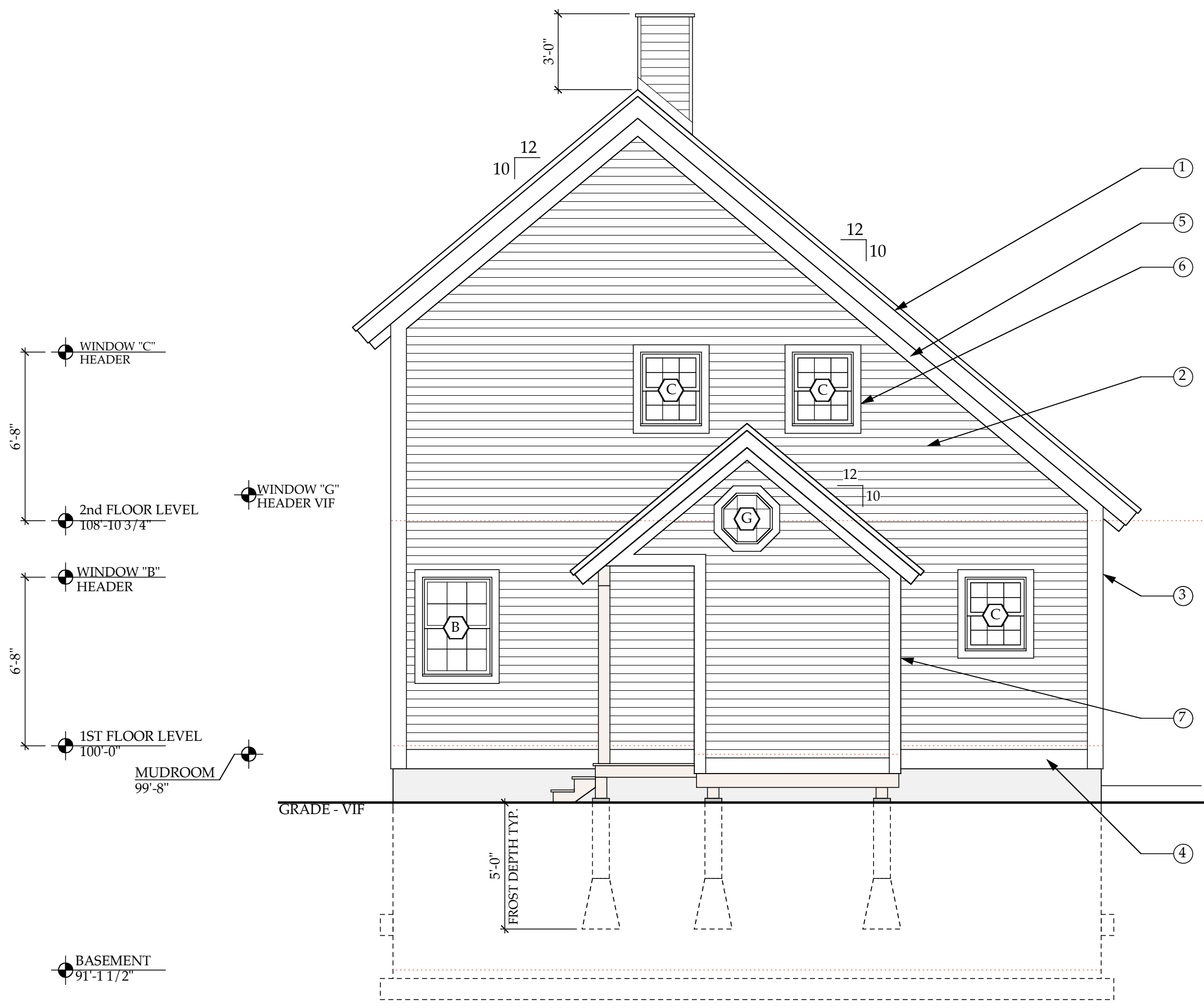


John R. Guminak
 Drafting & Design
 Services
 West Dover, Vt.
 For
TREEHOUSE
 Log & Timber Frame
 Homes
 W. Wardsboro, Vt.
 John & Jennifer
 Pontius



- NOTES:
1. WOOD FASCIA SEE DWG A4.1
 2. FIBER CEMENT SIDING VIF W/OWNER
 3. 5/4 X 8 CORNER BOARD, OR EQUIVALENT FIBER CEMENT PRODUCT AS REQ. BY MANUF. VIF
 4. 5/4 X 8 BASE BOARD, OR EQUIVALENT FIBER CEMENT PRODUCT AS REQ. BY MANUF. VIF
 5. 5/4 X 10 FRIEZE BOARD, OR EQUIVALENT FIBER CEMENT PRODUCT AS REQ. BY MANUF. VIF
 6. 5/4 X 4 WINDOW AND DOOR TRIM, OR EQUIVALENT FIBER CEMENT PRODUCT AS REQ. BY MANUF. VIF
 7. 5/4 X 6 CORNER BOARD, OR EQUIVALENT FIBER CEMENT PRODUCT AS REQ. BY MANUF. VIF

EAST ELEVATION

RESIDENCE FOR JOHN & JENNIFER PONTIUS
4/18/00 DATE
1/4" = 1'-0" SCALE
A2.2
EAST ELEVATION SHEET