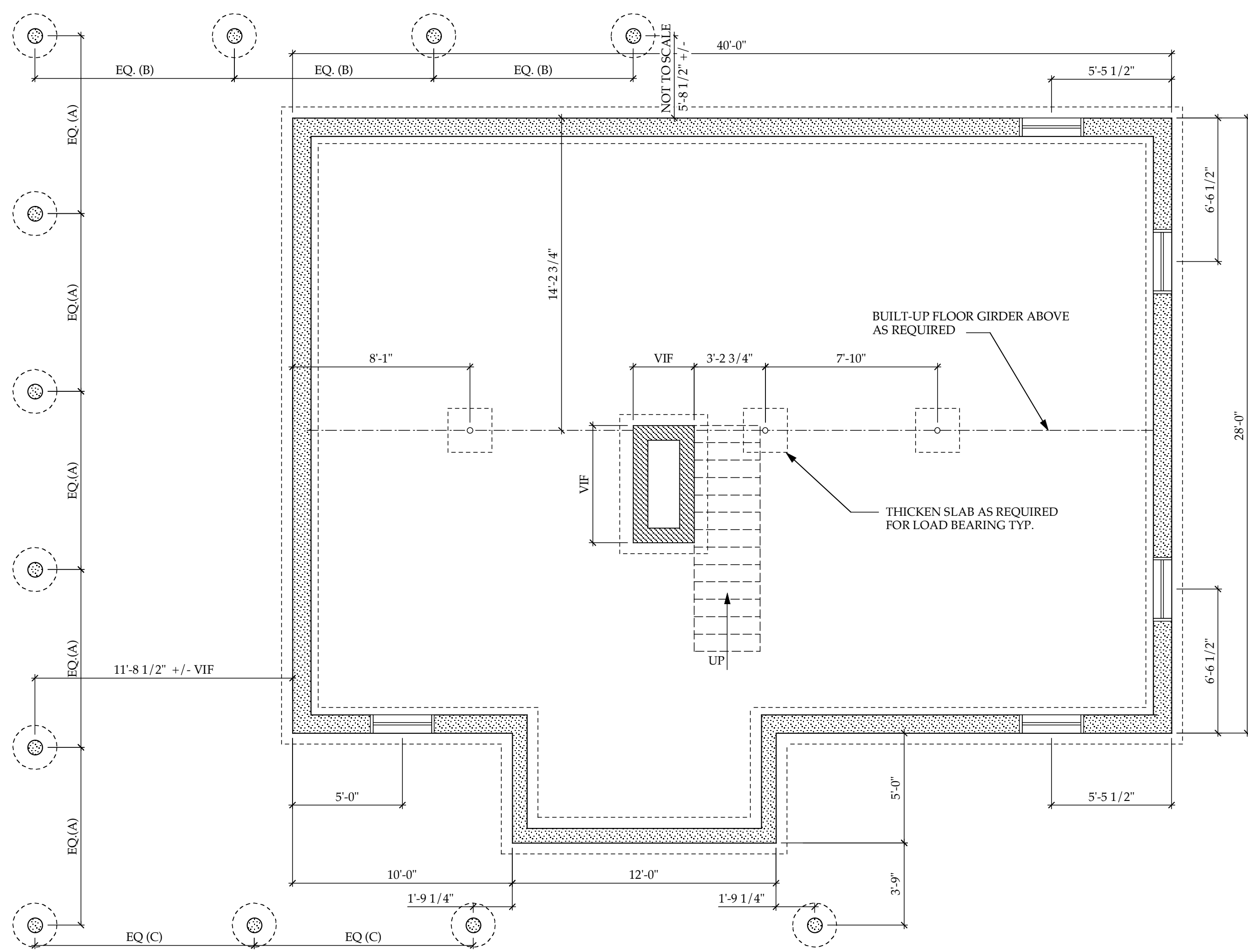


**John R. Guminak
Drafting & Design
Services**
West Dover, Vt.
For
**Treehouse
Timber Frame &
Log Homes**
W. Wardsboro, Vt.

1. GC TO VERIFY ALL
REQUIRED MASONRY ROUGH
OPENINGS. TYP.



| |
|--|
| LOG HOME FOR KENNETH & STEPANIE KING PROJECT |
| 9903 PROJECT # |
| 8/10/00 DATE |
| 1/4" = 1'-0" SCALE |
| FOUNDATION PLAN |
| A3.1 SHEET |