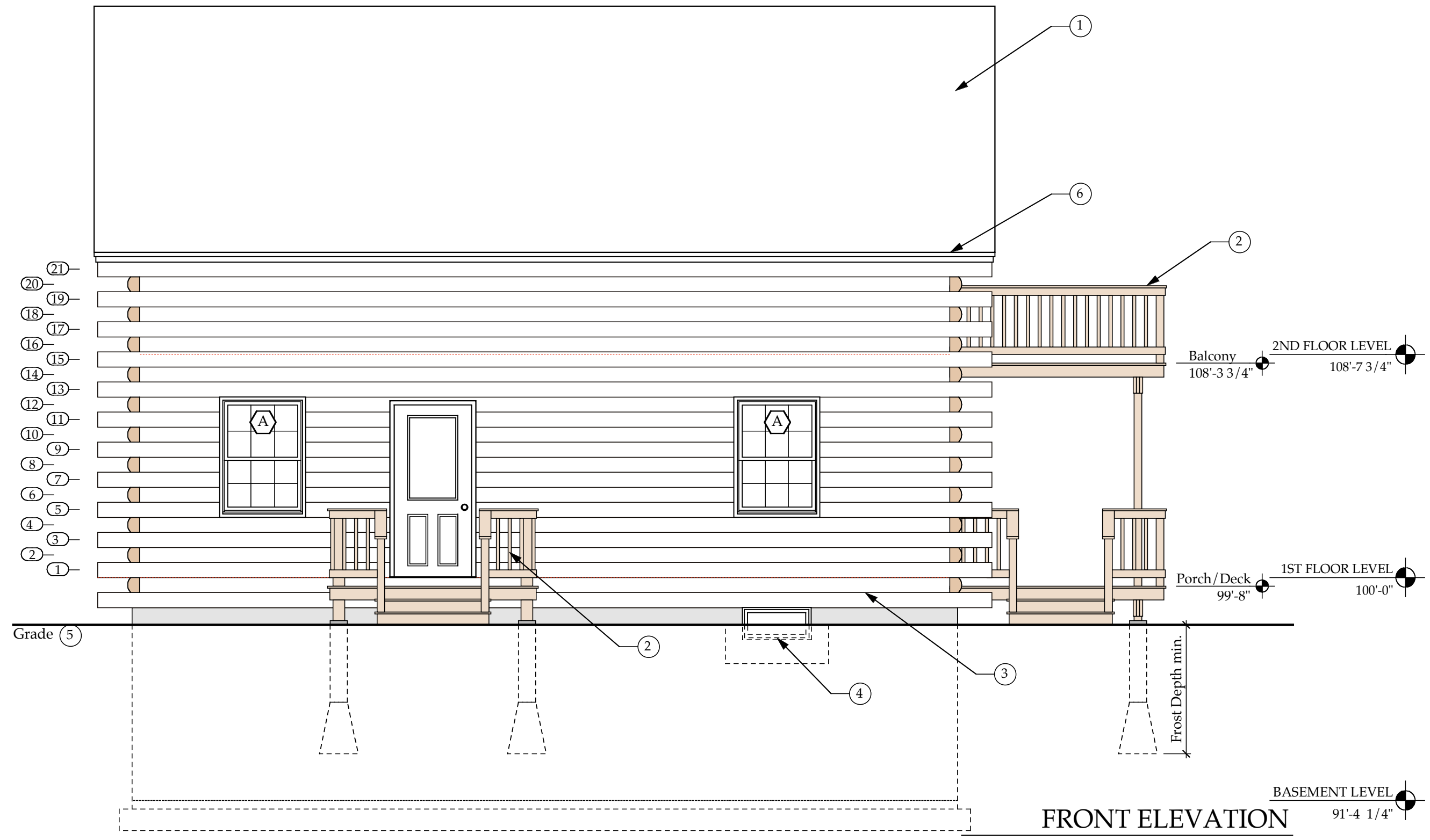


NOTES:

1. Roofing material, quality and color per owners approval typ.
2. Deck railing style per owners approval typ.
3. Use log siding to match walls below 1st floor level as required. typ.
4. Basement utility windows. GC to verify manuf., size and locations w/owner. typ.
5. Approximate grade level. actual grade may change per existing site conditions. VIF
6. All fascia and trim details per owners approval typ.



FRONT ELEVATION

WINDOW SCHEDULE (PELLA - Proline Series)						
#	Type	Model #	R.O. (W)	R.O. (H)	Qty	Remarks
A	Double Hung	PTD 3753	3' - 1 3/4"	4' - 5 3/4"	5	Must meet egress requirements
B	Double Hung	PTD 3341	2' - 9 3/4"	3' - 5 3/4"	3	
C	Casement	PCC 2535 LR	4' - 2 3/4"	2' - 11 3/4"	1	
D	Double Hung	PTD 2535	2' - 1 3/4"	2' - 11 3/4"	1	Alternate window unit verify w/owner
E	Sliding Patio Door	PCS 7281 OX	6' - 0"	6' - 8 5/8"	2	
F	Double Hung	PTD 3347	2' - 9 3/4"	3' - 11 3/4"	1	

Window Notes:

1. Model #'s and Rough Openings as listed are for "PELLA Proline Windows" Alternate window Manufacturers may be substituted upon owners approval.
2. Egress windows as listed in schedule must meet the minimum clear opening requirements of 20" wide and 5.7 sq.ft.
3. GC to verify all window options (Glazing, Grilles, Color, Trim, ect.) with Owner.

REVISIONS:

△ Added Window 'F' To Schedule

**LOG HOME
FOR
AMY & ANDREW
BOYDEN**

9903
PROJECT #

6/6/99
DATE

1/4" = 1'-0"
SCALE

FRONT ELEVATION

A2.1
SHEET

△